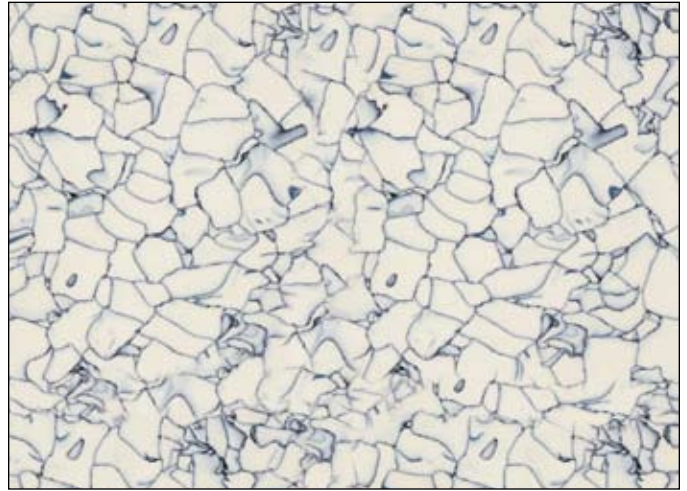




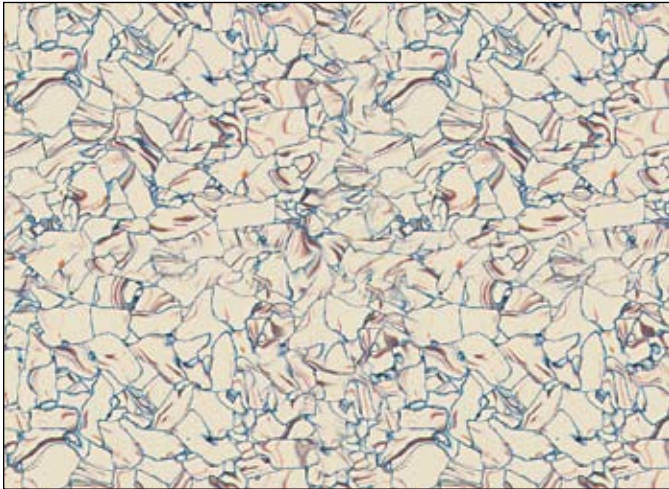
**EVEREST/Standard**

12"



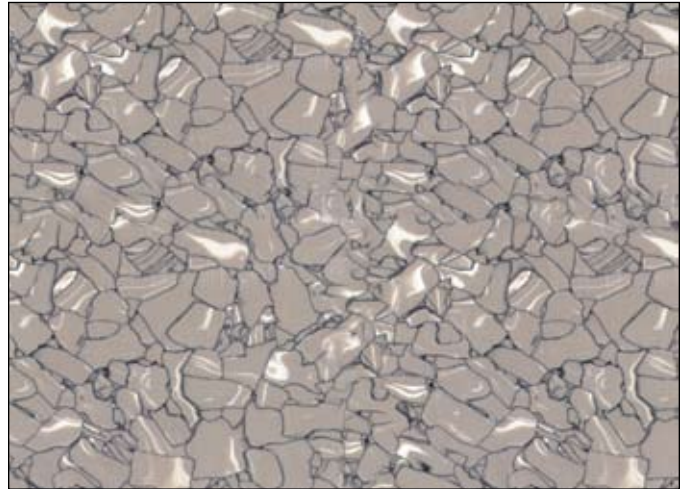
**MCKINLEY/Standard**

12"



**KATAHDIN/Standard**

12"



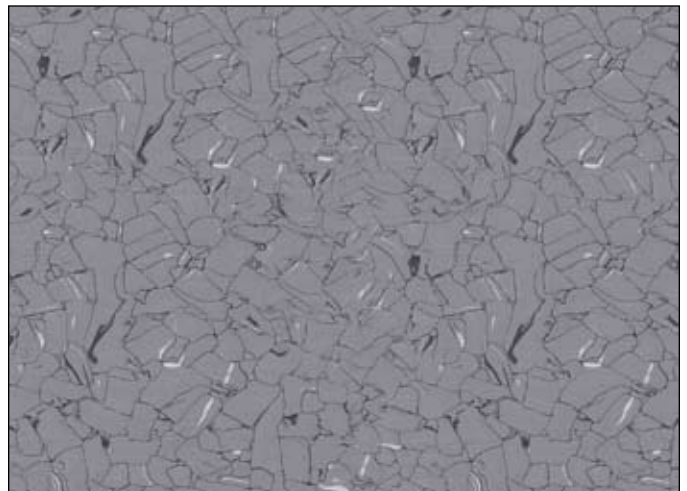
**RAINIER/Standard**

12"



**WASHINGTON/Standard**

12"



**GREYLOCK/Standard**

12"

**\* Visit [www.julieind.com](http://www.julieind.com) for additional special order color choices.**



SUMMIT SERIES ESD VINYL TILE SPECIFICATIONS

CATEGORY	STD TEST METHOD	ASTM SPEC	TEST RESULT	
Composition:	ASTM F 1700, Certificate of Compliance		Homogeneous	
Thickness:	ASTM F 536, DIN EN 428	As specified ± 0.0005 in.	1/8 in. standard size	
Nominal Sizes:	ASTM F 536, DIN EN 427	± 0.016 in./Linear ft.	12 x 12 in. *24 x 24 in avail. as special order item	
Squareness:	ASTM F 540	Maximum 0.010 in	< 0.010"	
Residual Indentation:	ASTM F 1914, DIN EN 433	Average less than 8%, max. single reading 10%	< 7%	
Flexibility:	ASTM F 137	No crack or break	No crack or break	
Dimensional Stability:	ASTM fed. Std. No. 501a, Method 6211, DIN EN 434	< 0.020"/ft. (0.51mm/304.8mm)	< 0.015"/ft.	
Electrical Resistance:	ESD S 7.1 (100V)	2.5 x 10 <sup>4</sup> - 10 <sup>6</sup> Ω	Conductive 2.5 x 10 <sup>4</sup> - 10 <sup>6</sup>	Static Dissipative 1.0 x 10 <sup>6</sup> - 10 <sup>8</sup>
	- Surface to Surface ASTM F 150 (100V) NFPA 99 (500V)	2.5 x 10 <sup>4</sup> - 10 <sup>6</sup> Ω	2.5 x 10 <sup>4</sup> - 10 <sup>6</sup>	1.0 x 10 <sup>6</sup> - 10 <sup>8</sup> (SD : 10 <sup>6</sup> - 10 <sup>9</sup> )
- Surface to Ground	DIN 51963 (500V)	< 2.5 x 10 <sup>4</sup> - 10 <sup>6</sup> Ω	< 2.5 x 10 <sup>4</sup> - 10 <sup>6</sup> Ω	1.0 x 10 <sup>6</sup> - 10 <sup>8</sup>
Electrostatic Propensity:	ESD STM 97.2 (w/conductive footwear) AATCC 134-06 (w/o conductive footwear)		Less than 10V Less than 2.0 kV	Less than 20V
Static Decay:	Federal Test Method 101B Method 4046 at 20% Relative Humidity	<0.5 sec	0.01 sec	0.01 sec
<i>*Note: Static dissipative vinyl tile is a special order item, conductive vinyl tile is our standard product.</i>				
Resistance to Chemicals:	ASTM F 925, DINEN 423	No more than a slight change in surface dulling, surface attack, or staining.	No more than a slight change in surface dulling, surface attack, or staining.	
Resistance to Heat:	ASTM F 1514	ΔE < 8 ave., max	< ΔE=2.0	
Resistance to Light:	ASTM F 1515	ΔE < 8 ave., max	< ΔE=6.0	
Static Load Limit:	Modified ASTM F 970-00		2,500 psi	
Smoke Density:	ASTM E 662	< 450	< 450	
Flame Spread:	ASTM E 84, NFPA 225	< 75	< 75	
Critical Radiant Flux:	ASTM E 648, NFPA 253		CLASS 1 > 1.08 W/cm <sup>2</sup>	
Abrasion Resistance:	ASTM D 1044, CS-10F wheel, 500Gm Weight		Cycle 10,000	% Gauge Loss 1.60
Resistance to Wear:	DIN EN 660-1		M	
Effect of Caster Chair:	DIN EN 425		No Damage	
Color Fastness:	ISO 105 B02		At least 6	
Standard for Health Care Facilities:	NFPA 99		Conforms to NFPA 99 requirement in effect at the time of installation	
Underwriters Laboratories:	UL 779		Meets UL Standard	

N + 1 PROTECTION

This information is accurate and current but may be subject to change without notice. Rev 02/10